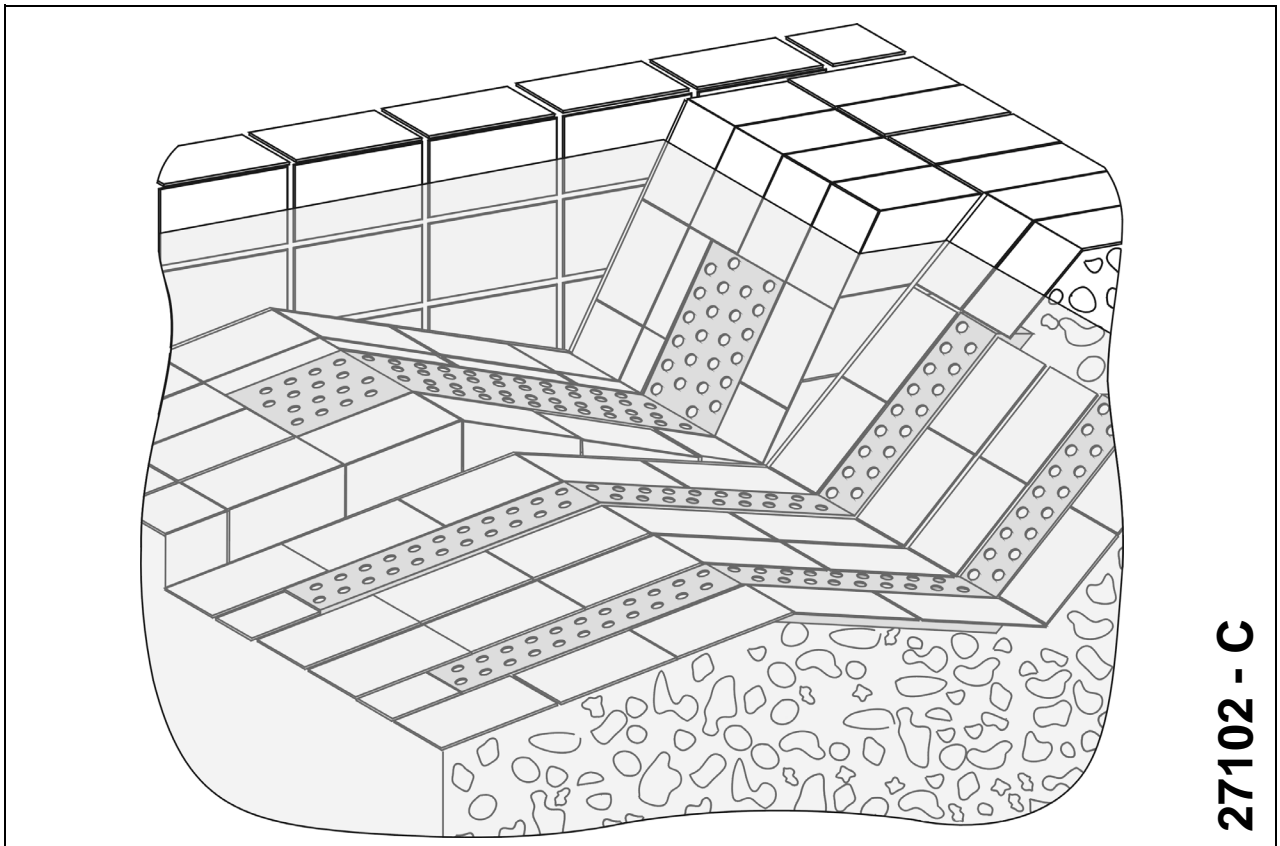


Air Loungers



Operator's Manual
Translation of the original



27102 - C

Contents

1	General / Usage Instructions	4
1.1	Guarantee notice	4
1.2	General	4
1.3	Usage Instructions	4
2	Safety Instructions	4
2.1	Safety Instructions for the Operator	4
3	Unit Description / General Technical Data	4
3.1	General Description	4
3.2	Technical Data	5
4	Air Loungers	5
4.1	Installation / Concrete-tile pool	5
4.2	Installation / Concrete pool with brush-applied sealant	6
4.3	Pipework diagram	7
5	Spare parts list Air Loungers	8
5.1	Concrete-tile pool.....	8
5.2	Concrete pool with brush-applied sealant.....	9

1 General / Usage Instructions

1.1 Guarantee notice

If the instructions contained in this operator's manual are not observed then any claims under guarantee shall be void.

1.2 General

All parts coming into contact with media are designed for water quality to DIN 19643.

The Air Loungers are of state-of-the-art technology and they were manufactured with great care under constant quality control conditions.

The operator's manual contains important instructions on how to use the Air Loungers safely, properly and economically. The instructions must be strictly adhered to in order to avoid danger and to ensure that the Air Lounger has a long useful life.

This manual does not take into account local regulations, the observance of which is the responsibility of the operator – also on behalf of installation personnel that may be involved.

1.3 Usage Instructions

Neither the entire unit nor parts thereof must be used in other systems. You are expressly directed to use it only in accordance with these instructions.

Under no circumstances must Air Loungers be used in a way that exceeds the figures quoted in the technical specification. In case of doubt, please contact your customer service or the manufacturer.

2 Safety Instructions

Please read this operator's manual carefully before you install and operate the Air Lounger. Make sure that you have understood everything.

2.1 Safety Instructions for the Operator

1. Regardless of what nature they may be, repairs must only be carried out by qualified persons. If necessary, the pool should be emptied.
2. The operator must ensure that
 - the operator's manual is always available for users to read,
 - the instructions in the operator's manual are being observed.
3. All parts that come into contact with the medium are resistant to an absolute salt content of up to 0.75% (4500mg/l Cl⁻). If the salt concentrations are greater than this, the manufacturer must be consulted.

3 Unit Description / General Technical Data

3.1 General Description

Included in the wide range of swimming pool accessories made by **fluvo** there are also Air Loungers, that are suitable for installation in large pools as well as smaller private pools. The Air Loungers are made of stainless steel 1.4571 and are available in the following configurations:

- Single
- Double

The installation kit consists of the stainless steel lounge, flexible air hoses, a 90° T-piece DN 50 and the required fastening elements for installation.

(see figs. 1 and 2)

3.2 Technical Data

Models	Single	Double
Air connection	DN 50	DN 50
Air flow rate	60 m ³ /h	60 m ³ /h
Operating pressure	150 mbar	150 mbar
Max. perm. pressure	250 mbar	250 mbar

4 Air Loungers

4.1 Installation / Concrete-tile pool

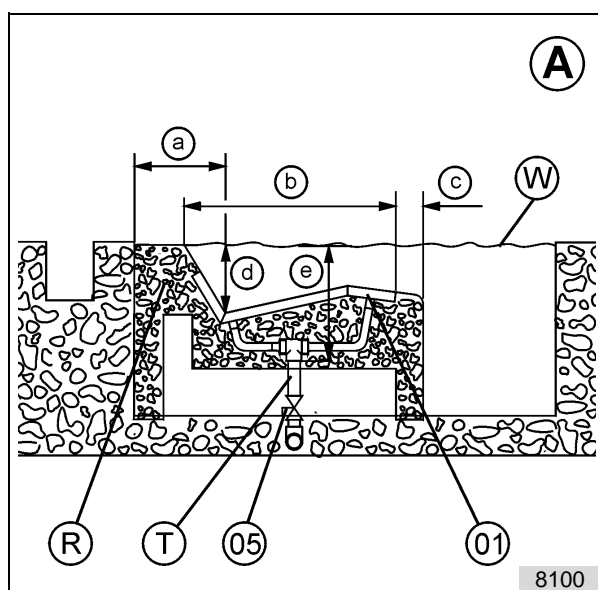


fig. 1: Single (A)

- a = min. 500 mm
- b = 1050 mm
- c = approx. 140 mm
- d = approx. 400 mm
- e = 600 mm
- f = 1450 mm
- g = approx. 360 mm
- h = 595 mm

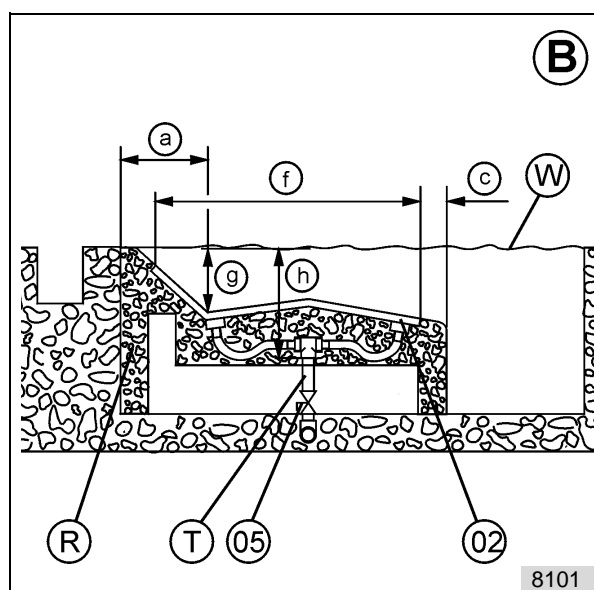


fig. 2: Double (B)

- R Seat bed
- T Air connection DN 50
(customer pro-vided)
- W Pool water level
- 01 Air Lounger single
- 02 Air Lounger double
- 05 Shut-off valve

After the floor of the swimming pool has been completely cemented the Air Lounger (01/ 02) is installed at the desired position using the fastening elements enclosed with the delivery.



Attention!

Please be sure to observe the dimensions shown in the drawing.

After the Air Lounger (01/02) has been installed, make the connection to the house air supply (T).



Important:

The shut-off valve (05) must be installed in such a way that every lounge (01/02) can be individually adjusted for operation.



Attention!

Cement the Air Lounge (01/02) in in such a way that its upper edge is later flush with the upper edge of the tiles.

Then the pool can be tiled internally. Apply a layer of mortar and the tiles just up to the Air Lounge (01/02).

4.2 Installation / Concrete pool with brush-applied sealant

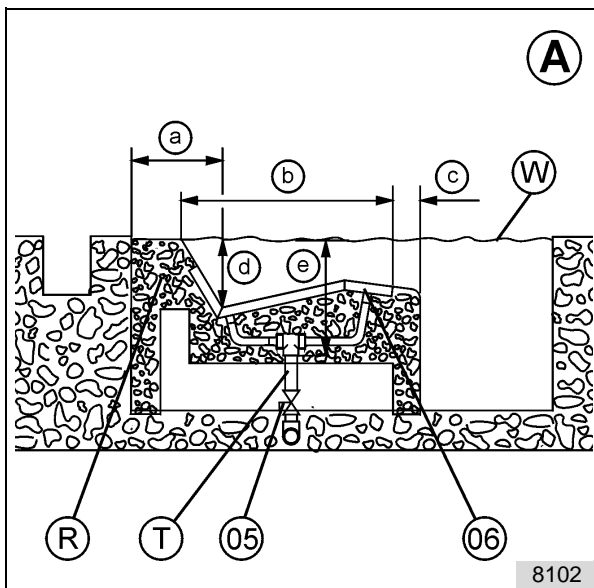


fig. 3: Single (A)

- a = min. 500 mm
- b = 1050 mm
- c = approx. 140 mm
- d = approx. 400 mm
- e = 600 mm

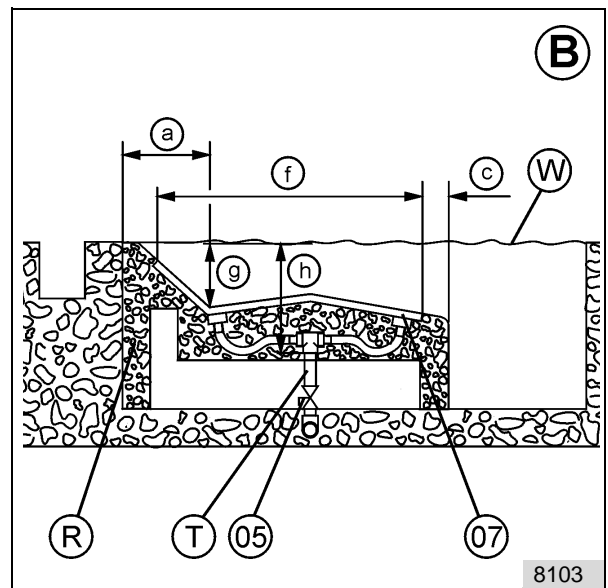


fig. 4: Double (B)

- R Seat bed
- T Air connection DN 50 (customer pro-vided)
- W Pool water level
- 05 Shut-off valve
- 06 Air Lounge single
- 07 Air Lounge double

After the floor of the swimming pool has been completely cemented the Air Lounge (06/07) is installed at the desired position using the fastening elements enclosed with the delivery.



Attention!

Please be sure to observe the dimensions shown in the drawing.

After the Air Lounge (06/07) has been installed, make the connection to the house air supply (T).



Important:

The shut-off valve (05) must be installed in such a way that every Lounge (06/07) can be individually adjusted for operation.



Attention!

Cement the Air Lounger (06 / 07) in up to the surface of the outer flange. Then the swimming pool can be lined with brush-applied sealant over the outer flange right up to the Air Lounger (06/07).

Then the pool can be tiled internally. Apply a layer of mortar and tiles also over the flange just up to the Air Lounger (06/07).

4.3 Pipework diagram

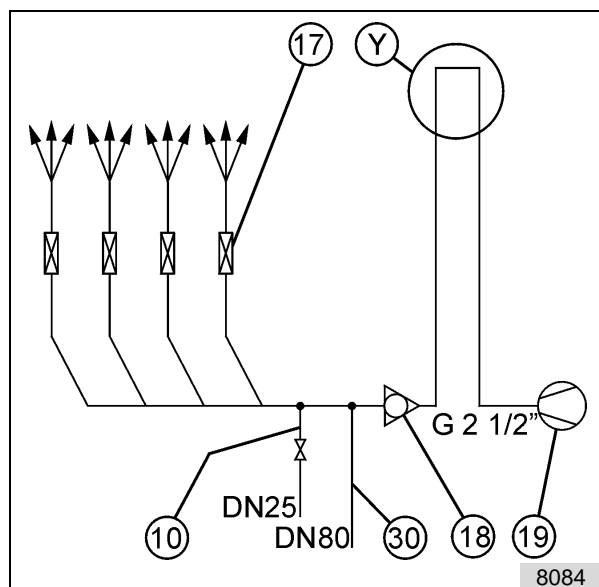


fig. 5: Suggestion for 4 Air Loungers in a row
Delivery rate per connection: 60 m³/h

- 10 Drain pipe
- 17 Shut-off unit
- 18 Non-return valve
- 19 Blower, P = 2.9 kW
- 30 Fresh water pipe
- Y Air loop (this must be placed a minimum of 0.5m above the surface of the water)

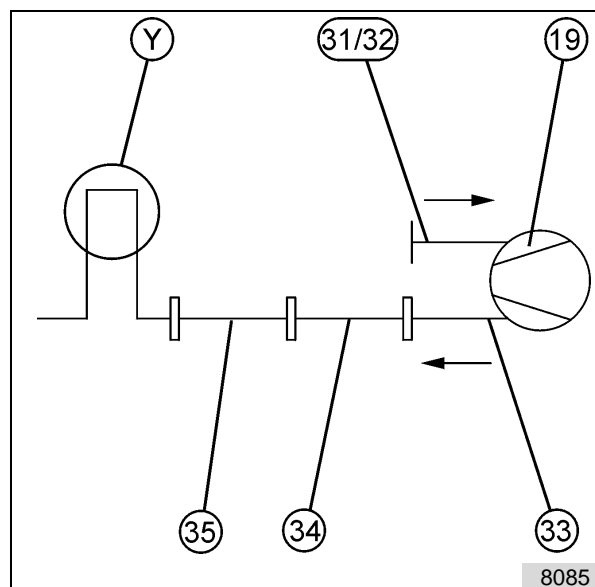


fig. 6: When blower accessories are fitted (schematic diagram)

- 19 Blower
- 31/32 Fine filter / muffler
- 33 Heat-resistant pipe
- 34 Intermediate piece (only for installation of 31/32)
- 35 Pressure control valve
- Y Air loop (this must be placed a minimum of 0.5m above the surface of the water).



Important:

The suggested pipework diagram takes no account of actual local conditions.



Attention!

To determine the exact dimensions of the pipes all elements that contribute to the flow must be taken into consideration. Most importantly no 90° T-pieces or angles must be employed. Furthermore all shut-off devices such as flaps or sliders as well as measuring detectors etc. must be included in the flow reduction calculation.

**5 Ersatzteilliste Luftsprudelliegen /
Liste des pièces detachées Canapés d'air/
Spare parts list Air Loungers**

5.1 Betonbecken gefliest / Bassin béton-carrelage / Concrete-tile pool

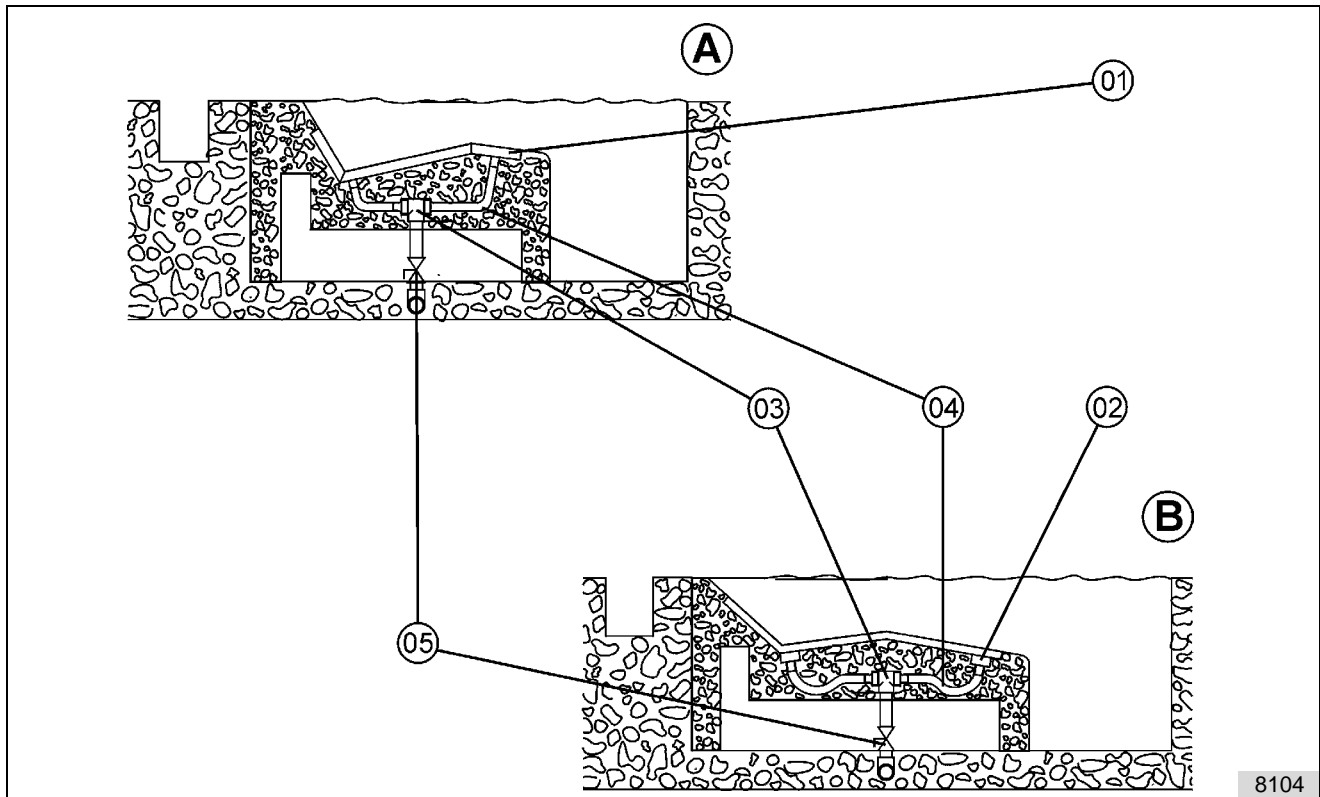


Abb. 7

Pos.	Best. Nr. No. de réf. Order No.	Bezeichnung	Désignation	Description	Stck. Nbre. Qty.	Bemerkung Remarque Remark
01	56942	Einzelstrang-Luftliege	Canapé d' air monoca- ténaire	Single Air Lounger	1	
02	56906	Doppelstrang-Luftliege	Canapé d' air bicaténaire	Double Air Lounger	1	
03	63264	90° T-Stück	T 90°	90° T-piece	1	
04	16243	Flexibler Schlauch	Tuyau flexible	Flexible hose	1	
05	63765	Kugelhahn DN 50	Vanne à boules DN 50	Ball valve DN 50	1	
	91803	Einbausatz und Fertig- montage komplett	Pièce à sceller et kit de montage complets	Installation kit and assembly kit complete	1	Einzelstrang- Luftliege / Single Air Lounger / Canapé d' air monocaténaire
	91804	Einbausatz und Fertig- montage komplett	Pièce à sceller et kit de montage complets	Installation kit and assembly kit complete	1	Doppelstrang- Luftliege / Double Air Lounger / Canapé d' air bicaténaire

5.2 Betonbecken mit Streichfolie / Bassin béton avec étanchéité souple / Concrete pool with brush-applied sealant

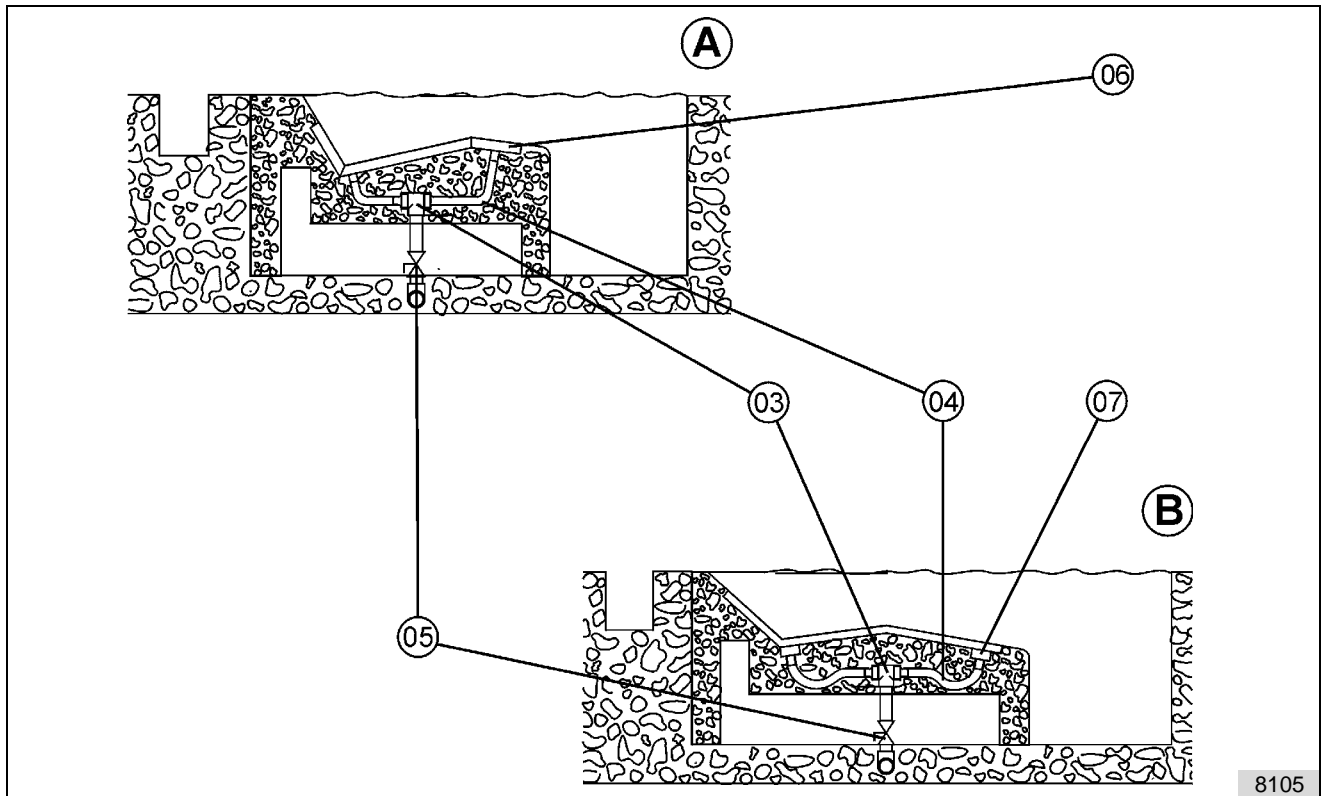


Abb. 8

Pos.	Best. Nr. No. de réf. Order No.	Bezeichnung	Désignation	Description	Stck. Nbre. Qty.	Bemerkung Remarque Remark
06	57954	Einzelstrang-Luftliege	Canapé d' air monocaténaire	Single Air Lounger	1	
07	57953	Doppelstrang-Luftliege	Canapé d' air bicaténaire	Double Air Lounger	1	
03	63264	90° T-Stück	T 90°	90° T-piece	1	
04	16243	Flexibler Schlauch	Tuyau flexible	Flexible hose	1	
05	63765	Kugelhahn DN 50	Vanne à boules DN 50	Ball valve DN 50	1	
	90335	Einbausatz und Fertigmontage komplett	Pièce à sceller et kit de montage complets	Installation kit and assembly kit complete	1	Einzelstrang-Luftliege / Single Air Lounger / Canapé d' air monocaténaire
	90334	Einbausatz und Fertigmontage komplett	Pièce à sceller et kit de montage complets	Installation kit and assembly kit complete	1	Doppelstrang-Luftliege / Double Air Lounger / Canapé d' air bicaténaire

Schmalenberger GmbH + Co. KG

Strömungstechnologie

Im Schelmen 9 - 11

D-72072 Tübingen / Germany

Telefon: +49 (0)7071 70 08 - 0

Telefax: +49 (0)7071 70 08 - 10

Internet: www.fluvo.de

E-Mail: info@schmalenberger.de

© 2018 Schmalenberger GmbH + Co. KG ; All rights reserved

This document is subject to change without notice